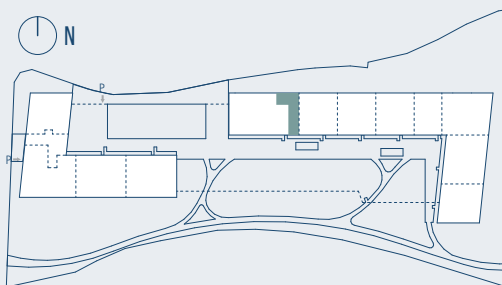
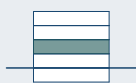


APPARTEMENT 20.105



4 pièces




1er étage

106.13 m² surface PPE


surface habitable (sans murs porteurs et gaines techniques) + 1/2 balcon + 1/2 cave

 habitable 97.32 m²

 balcon 12.33 m²

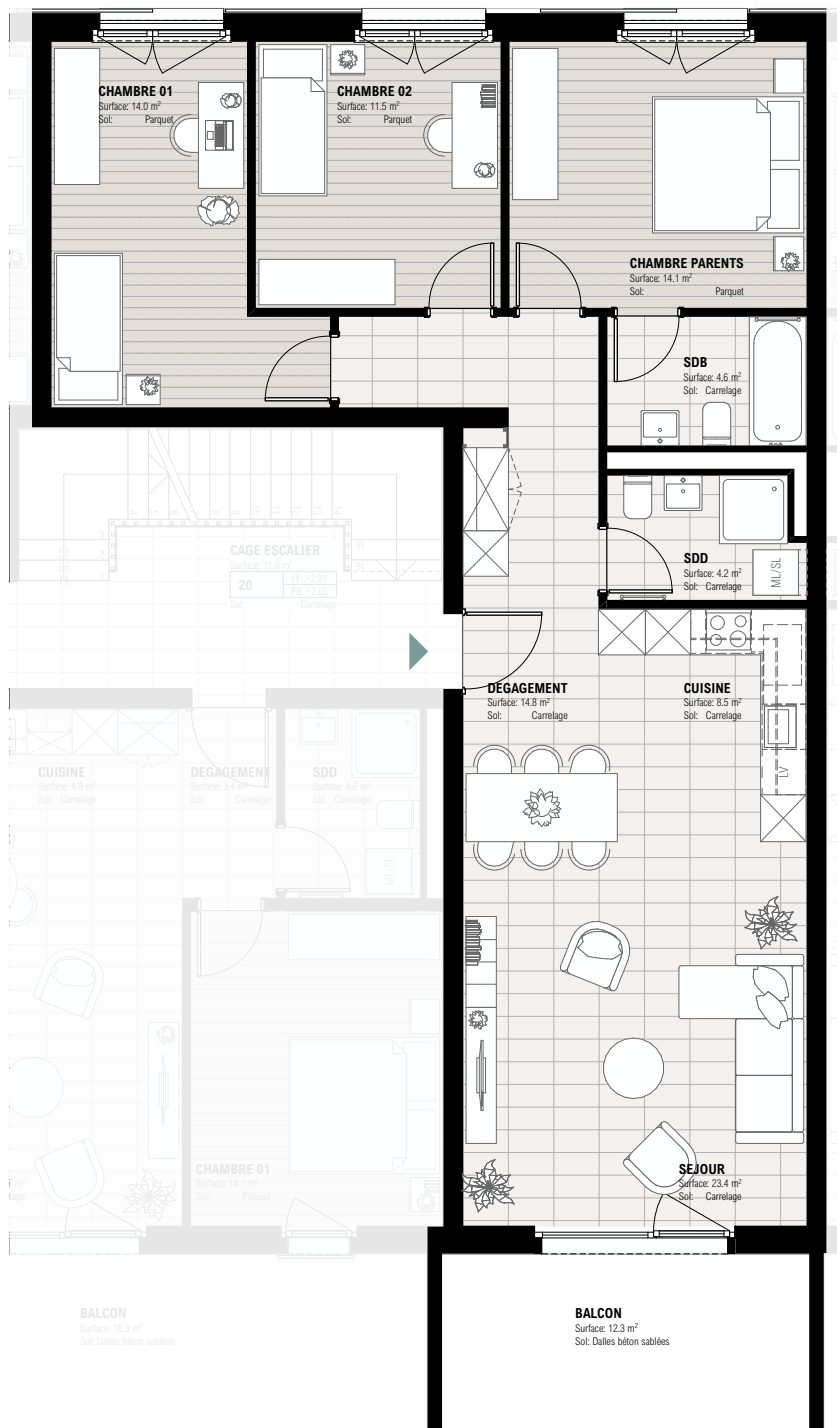
 cave 5.29 m²

 orientation séjour : Sud

 3 chambres dont une parentale, cuisine ouverte sur séjour

 1 salle de bain et 1 salle de douche

 place de stationnement optionnelle



Rezky Kultys

Responsable vente PPE

rk@les-rives-veveyse.ch

+41 79 604 85 19

0 5 m

Document non contractuel